

417 200 €

**New apartment**

**4 rooms**

**Surface : 80 m<sup>2</sup>**

**Surface of the living : 30 m<sup>2</sup>**

**Year of construction : 2022**

**Exposition : Sud est**

**View : Dégagée**

**Hot water : Individuelle thermodynamique**

**Inner condition : new**

**Standing : residential**

**Building condition : new**

**Features :**

Place de parking privée sous sol, lift,  
armored door, Volets roulants, intercom

3 bedroom

1 terrace

1 bathroom

1 WC

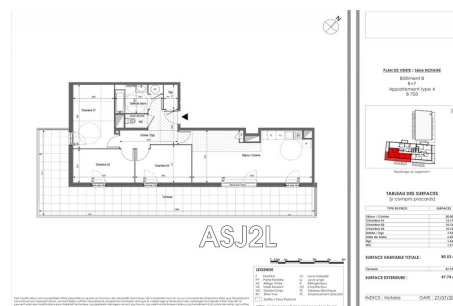
2 parkings

Document non contractuel  
21/09/2023 - Prix T.T.C



### Apartment Marseille

Choose your new residence in the 10th arrondissement of Marseille to settle your family in a pleasant environment halfway between the Saint-Tronc and Saint-Loup districts and not far from the hills of the Col de l'Évêque. The 2 to 4-room apartments, some of which are duplex, benefit from the private garden of the residence. For daily life, everything is nearby, shops and schools. The White House Park is also quickly accessible. Several lots are still available for sale, in particular this last apartment of type T4 located on the top floor, with its large terrace and enjoying a dominant view of the hills of Mont Sainte-Croix. This T4 is composed of a large living room of 30 m<sup>2</sup> three large bedrooms a bathroom a separate toilet Two parking spaces in the basement complete this property



**ASJ2L** - 2 Rue Douce - 83330 Le Castellet

Tél. +33 (0)6 07 22 46 65 - contact@asensimmoj2l.com - www.asensimmoj2l.com

Document non contractuel